



Endolaser 120

High performance
therapeutic laser



PARTNER FOR LIFE



Endolaser 120

High performance therapeutic laser

The 905 nm GaAs laser probe delivers pulses in nanoseconds, producing average power of 100 mW and peak power of up to 100 W per diode. This results in a higher concentration of light energy (I_0), or photon density at tissue depth, without the risk of burning tissue.

Proven effectiveness

The clinical application of light – produced by laser diodes with power output of up to 1600 mW - is scientifically well documented. The 905 nm (GaAs) pulsed laser is the most versatile for deep structures (joints, vertebrae, back muscles), whereas the 808 nm (GaAlAs) is more appropriate for wound healing and tissue repair. Scientific evidence continues to demonstrate that pulsed light does have biological and clinical effects that are different from those of continuous wave (CW) light. Several studies have revealed that the LLLT in the pulsed wave mode of operation can better penetrate through the melanin and other skin barriers, bolstering the hypothesis that pulsing is beneficial in reaching deep target tissue and organs

Endolaser 120

Evidence-based clinical guidelines

The Endolaser provides the user with dosage recommendations for the effective treatment of pain and various musculoskeletal disorders.

Multiple laser probes available

For the treatment of smaller surfaces, a selection of single laser probes is available with total power of up to 100mW and 500mW. For the treatment of larger areas, the cluster probe, which combines 4 diodes with total power of up to 1600 mW, can be used. The Endolaser automatically recognizes the type of probe that is connected.

Quick access power buttons

The output power of the Endolaser 120 can be easily set to different levels for easy dosage settings.



Endolaser 120: the compact laser device for a fast and accurate laser treatment!



Endolaser 120

Target light

When treating a patient without probe-skin contact, the red target light helps the therapist focus on the area to be treated. The target light contributes to safe treatment by indicating the irradiation area of the laser beam.

Ergonomic probes

The ergonomic probes can be used with or without skin contact. Each probe is equipped with a start-pause button for easy control. The indication light on top of the probe indicates the emission state (laser running or laser-ready).



Endolaser 120

- Powerful solution to: eliminate pain, reduce inflammation and accelerate tissue healing
- Fast & easy operation: "with the speed of light"
- Safe
- Evidence Based Clinical Guidelines incorporated
- Drug-free and non-invasive
- Effective
- Store your favourites
- High accuracy due to the smart laser monitoring system





Endolaser 120

- Automatic recognition of connected laser probes
- High quality laser diodes
- Full colour touchscreen
- Automatic dosage / time adjustment based on output power level
- Ergonomically designed probes
- Variety of probes: Continuous Wave (808 nm) and Pulsed (905 nm)
- Compact & light weight

Endolaser 120

1633901 Endolaser 120 with 1 holder, without Laser Probe

Standard accessories

1633750 Instruction for Use (PDF on CD-ROM)

1633751 Information Booklet

3444820 Laser Safety Eyewear (2 goggles included)

3444357 Mains Cable 250V/2.5A, 2.5 m



ORDERING DATA

1633902 Endolaser 120 with 2 holders, without Laser Probe

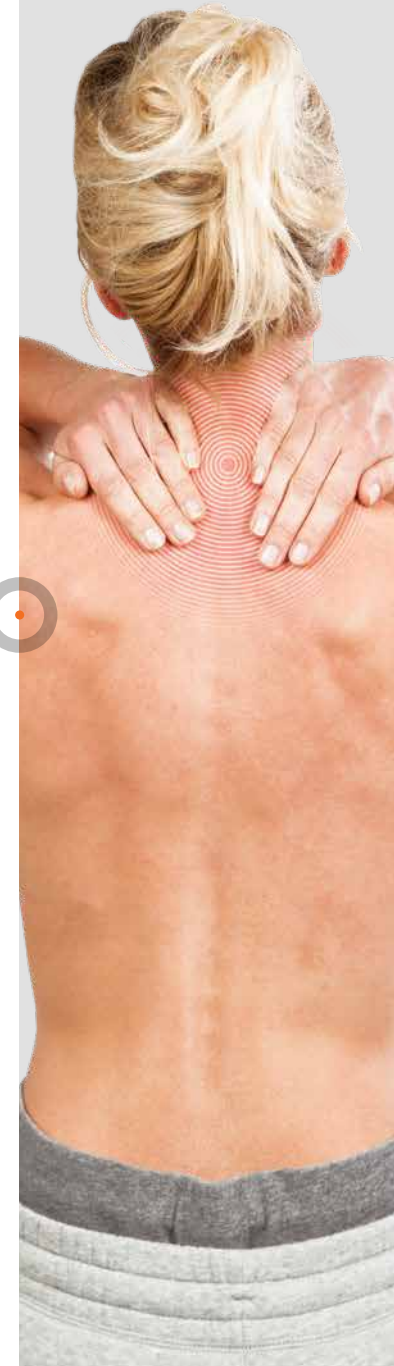
Standard accessories

1633750 Instruction for Use (PDF on CD-ROM)

1633751 Information Booklet

3444820 Laser Safety Eyewear (2 goggles included)

3444357 Mains Cable 250V/2.5A, 2.5 m



Endolaser 120

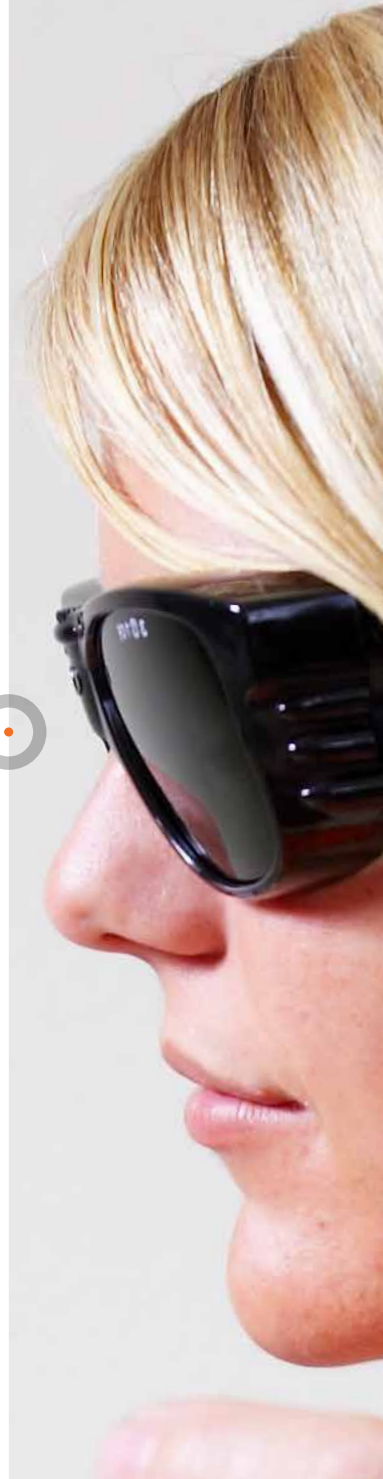
TECHNICAL SPECIFICATIONS

General

Mains voltage:	100 - 240 Volt
Frequency:	50/60 Hz
Max. power output:	30 VA
Dimensions device (LxWxH):	1633901: 22 x 17 x 8.5 cm 1633902: 30 x 17 x 8.5 cm
Weight unit:	1633901: 842 grams 1633902: 976 grams
Type of laser diode:	GaAs (pulsed) and GaAlAs (continuous)
Preprogrammed clinical protocols:	22
Number of favourites to save:	20

Safety and performance standards

Safety class according to IEC 60601-1	Electrical safety class I
Applied parts	Type B applied part.
Classification of laser according to IEC60825-1	3B
This is a medical device.	It complies with all applicable medical regulations. For more details please consult the instructions for use (downloadable via www.enraf-nonius.com).



ACCESSORIES ENDOLASER 120

Optional accessories

			Output	Peakpower
1632801	LP100P	Laser probe 100 mW, super pulsed laser diode (905 nm)	100 mW	100 W
1632802	LP500C	Laser probe 500 mW, continuous laser diode (808 nm)	500 mW	
1632803	CP4X100C	Cluster probe 4x100 mW, continuous laser diode (808 nm)	4 x 100 mW	
1632804	CP4X400C	Cluster probe 4x400 mW, continuous laser diode (808 nm)	4 x 400 mW	
3444820	Laser safety eyewear (set of goggles)			
1632606	Remote Interlock Door Cable – Jack Type			



1632801



1632802



1632803



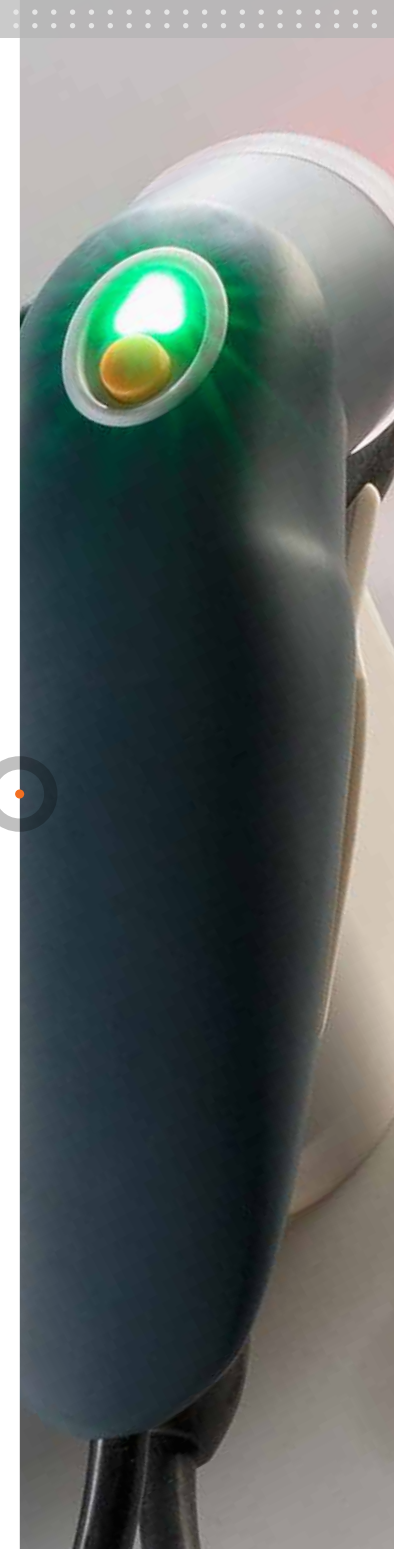
1632804



3444820



1632606





Endolaser 120

High performance
therapeutic laser

Enraf-Nonius B.V. | Vareseweg 127 | 3047 AT Rotterdam | The Netherlands
www.enraf-nonius.com | info@enraf-nonius.nl | + 31 - (0) 10 20 30 600



PARTNER FOR LIFE