



Endopuls FSWT

Power where it is needed



PARTNER FOR LIFE



Endopuls FSWT

More and more physicians in orthopaedics and general medicine, in rehabilitation hospitals, and in the field of sports are expanding their range of treatments with extracorporeal, focused shockwave therapy (ESWT).

This effective method is the only noninvasive alternative for many conditions, such as calcification or inflammations of tendons. It takes just three to six therapy sessions, and it can spare patients from surgical interventions or from medications containing cortisones. Safe & effective.

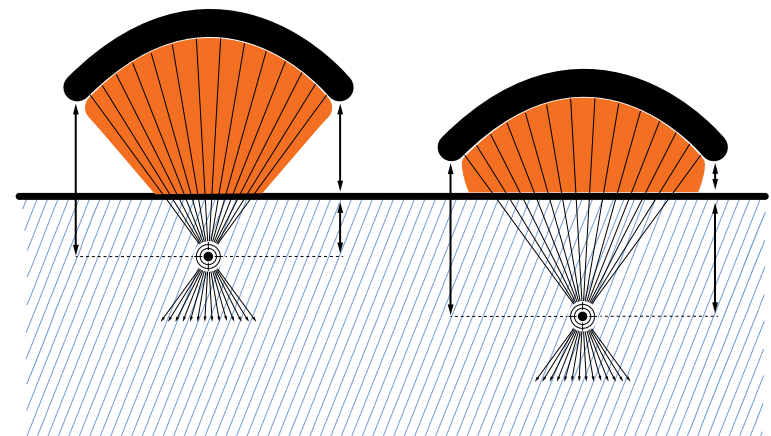
Endopuls FSWT for
the optimal concentration of
healing energy
at the desired depth



Endopuls FSWT

The Endopuls FSWT generates the shockwaves in a geometrically designed concave applicator. Embedded in this applicator are 200 ceramic piezoelectric elements. Each element generates a pressure-puls in a pre-defined direction. All elements focus at the same point. In this focus point the effect of 200 individual elements are accumulated generating a focussed shockwave exactly where it is needed, deep in the tissue.

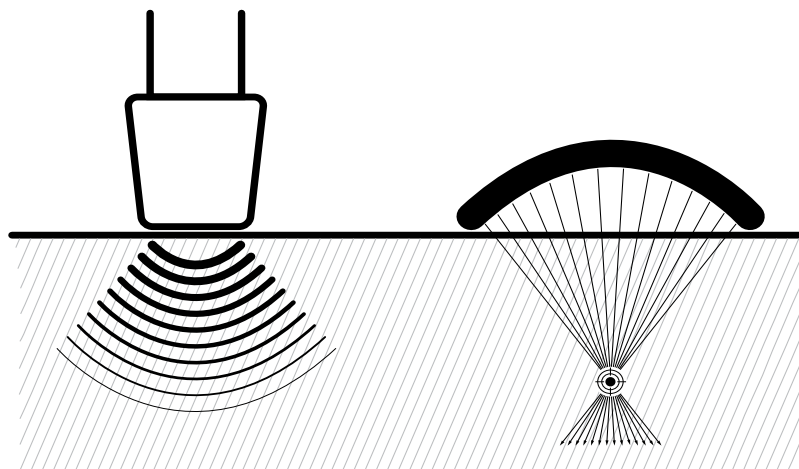
There are gelpads of different thickness to define the focal depth of the effective shockwaves (5 - 40 mm). A thinner gelpad will give a deeper penetration. (The penetration depth is indicated on your gelpads). Easy, accurate and very focussed.



Endopuls FSWT

Opposite to radial shockwave, where the energy of the shockwaves is the highest at the point of impact (at the skin and in the superficial layers) the focussed shockwaves passes the superficial layers gently. This makes a focussed shockwave treatment more comfortable for the patient, but without loss of effectiveness, exactly at the depth where it is needed.

For deeper structures, like calcifications in the muscles or ligamentous structures below bursae, radial shockwaves already lost part of their intensity. Focussed shockwaves however concentrate exactly at the desired depth, defined by the gel pad.



Endopuls FSWT indications

The Endopuls FSWT is very easy to operate by means of a large touch-screen interface. The output power of the unit is optimal for a wide range of indications, such as

- Myofascial trigger points and the effects they have on back pain, neck pain and myofascial pain syndrome
- Calcifying tendinitis of the shoulder and calcifying tendinopathy, calcific tendinitis and rotator cuff disease with or without calcification
- Subacromial pain syndrome
- Lateral epicondylitis (lateral epicondylitis of the elbow/tennis elbow/mouse elbow/mouse arm), medial epicondylitis (golfer's elbow)
- Patella tip syndrome (jumper's knee, patellar tendinopathy)
- Achilles tendinopathy
- Plantar fasciopathy and plantar fasciitis
- Pseudo arthrosis and bone non-union, delayed union and its causes, osteochondritis dissecans and its causes, vascular necrosis (femoral head necrosis, knee)
- Medial tibial stress syndrome
- Greater trochanteric pain syndrome
- Stress fractures



Endopuls FSWT

1651901 Endopuls FSWT 220-240 V

Standard accessories

- Handpiece
- Set of gel pads
- Contact gel
- Power cable
- Instructions for use



ORDERING DATA



Endopuls FSWT

- 1651800 Handpiece
- 1651801 Set of gelpads (5, 10, 15, 20, 25, 30, 35 & 40 mm)
- 3442929 Contact-gel, bottle 250 ml, box of 12 pcs.

ACCESSORIES



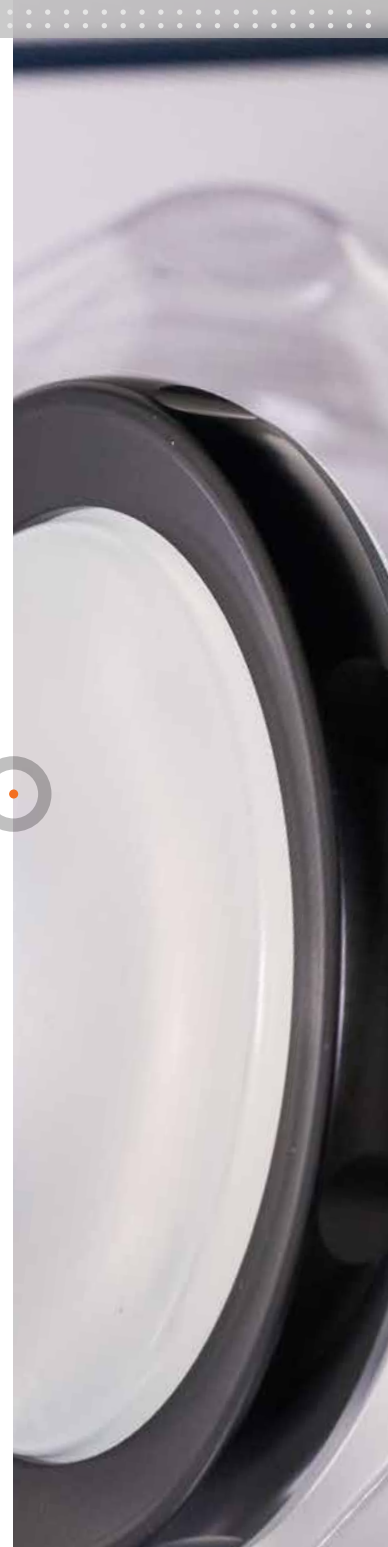
1651800



1651801



3442929

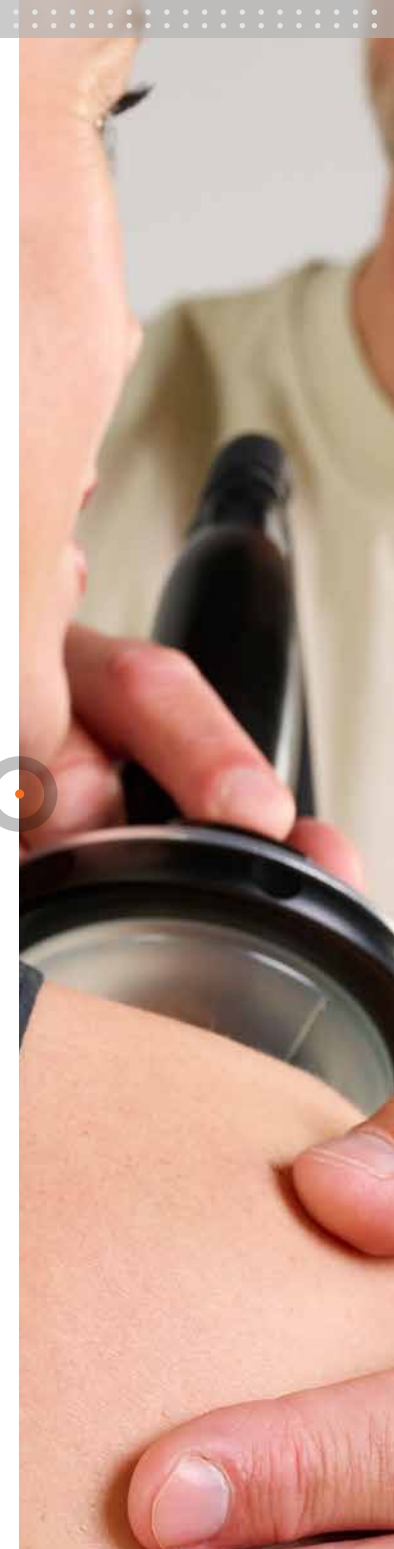


Endopuls FSWT

TECHNICAL SPECIFICATIONS

Power supply	220 V AC; 60 Hz / 230 V AC; 50 Hz
Power consumption	Max. 300 VA
Output energy	0.005–0.500 mJ/mm ² ± 20%
Output frequency	1–12 Hz ± 20%
Expected lifetime of handpiece	5,000,000 shocks
Dimensions	W 405 mm x H 207 mm x D 424 mm
Weight	23 kg (control unit without accessories)

For the full technical specifications please see the Instructions for Use.





Endopuls FSWT

Power where it is needed

Enraf-Nonius B.V. | Vareseweg 127 | 3047 AT Rotterdam | The Netherlands
www.enraf-nonus.com | info@enraf-nonus.nl | + 31 - (0) 10 20 30 600



PARTNER FOR LIFE